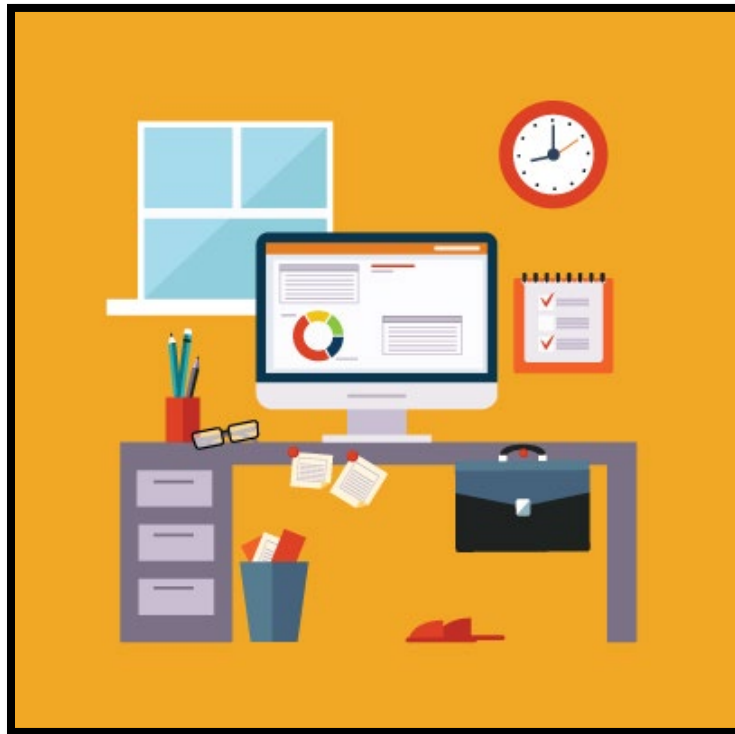


# Digital Learning Models for SY2021-2022





Cherokee County  
School District



## Cherokee County School District Remote Digital Learning SY2021-22

The Digital Learning environment for students is designed to provide an educational experience that aligns with the traditional classroom. Two models have been selected to serve students who have applied to participate in a Digital Learning platform: an assigned digital teacher and classroom for elementary school students, and a Blended Learning model of instruction for all middle and high school students. An additional instructional strategy, that can be incorporated into Blended Learning, Simultaneous Concurrent Teaching, may be utilized for middle and high school students as deemed appropriate by the classroom teacher.

Elementary	Middle/High
<p data-bbox="224 695 781 842">A self-contained digital classroom environment where the teacher is digital and provides instruction in all content areas.</p>  An icon representing a digital classroom. It shows a computer monitor displaying two stylized human figures, with a larger stylized human figure in front of the monitor, suggesting a teacher interacting with a digital environment.	<p data-bbox="829 695 1409 884">Blended Learning where lessons and activities occur through Canvas and include both live and recorded instruction offered remotely during a designated digital learning period.</p> <p data-bbox="829 926 1409 1073">Simultaneous Concurrent Teaching where lessons and activities occur live during the same class period for students both physically and virtually.</p>  An icon representing blended learning. It shows a person standing at a whiteboard, pointing at it, with a laptop computer in the foreground, symbolizing the integration of physical and digital instruction.



# Cherokee County School District Remote Digital Learning SY2021-22

## Elementary Instructional Model

Elementary school students who declare for Digital Learning in the 2021-22 school year will be scheduled into a digital classroom with a teacher dedicated to digital learning using our learning management system, Canvas. The learning model is similar to the format utilized for elementary digital learning in the 2020-21 school year with enhancements that include potential shared teachers for specific content areas and grade levels.

As noted in the sample instructional day chart (sample follows this section), elementary digital learners will participate in a full day of learning just like their face-to-face peers in the building. Digital learning will include reading, writing, language arts, math, social studies, science, physical education, art, and music instruction.

Students are expected to participate in live whole group lessons, live small group lessons, and asynchronous instructional lessons over video or another digital format. Additionally, elementary digital learners are expected to complete and submit work both independently and collaboratively (as assigned).

Digital learning students who have been identified to receive service for specialized programs such as Gifted, EIP, ESOL and Special Education will receive this service digitally. Federal and State Departments of Education provide a variety of service models to meet the needs of students. Therefore, the service model utilized with digital learners may vary from the service model used at the locally zoned elementary school for face-to-face learners.

Digital learning students are expected to follow the Code of Conduct at all times. *The ABCs of CCSD Netiquette* (graphic follows this section) was developed to help guide conversations with digital students regarding behavioral expectations when online. Parents can help to support the learning process by also reviewing these expectations with their students.

Lastly, any consumable resources such as math workbooks, phonics workbooks, manipulatives, etc. will be distributed by the student's school to support online instruction.



# Cherokee County School District Remote Digital Learning SY2021-22

## Elementary Sample Schedule with Differentiation and Intervention Block

	Monday	Tuesday	Wednesday	Thursday	Friday
<b>7:40 – 8:05</b>	Attendance, Morning Meeting, Icebreaker Activity, Introduce Agenda and Expectations for the Day				
<b>8:05 – 9:00</b>	ELA: Foundations/Word Work, Read Aloud, Reading and/or Writing Mini-lesson, Tasks, Writers Workshop				
<b>9:00 – 9:45</b>	9:00-9:20 <i>Reading Group A</i>  9:25 – 9:45 <i>Reading Group B</i>  9:00-9:45 <i>Groups C &amp; D RAZ assignment &amp; Complete ELA tasks/Centers</i>	9:00-9:20 <i>Reading Group C</i>  9:25 – 9:45 <i>Reading Group D</i>  9:00-9:45 <i>Groups A &amp; B RAZ assignment &amp; Complete ELA tasks/Centers</i>	9:00-9:20 <i>Reading Group A</i>  9:25 – 9:45 <i>Reading Group B</i>  9:00-9:45 <i>Groups C &amp; D RAZ assignment &amp; Complete ELA tasks/Centers</i>	9:00-9:20 <i>Reading Group C</i> 9:25 – 9:45 <i>Reading Group D</i> 9:00-9:45 <i>Groups A &amp; B RAZ assignment &amp; Complete ELA tasks/Centers</i>	9:00-9:45 <i>Independent RAZ assignment and complete ELA tasks</i>  Teacher to meet with small groups, as needed.
<b>9:45- 9:55</b>	<b>Snack and Brain Break</b>				
<b>9:55 – 10:40</b>	<b>Math: Number Talks, Ready Lesson, Whole Group Guided Practice, Math Tasks</b>				
<b>10:40-11:15</b>	10:40-10:55 <i>Math Group A</i>  11:00 – 11:15 <i>Math Group B</i>  10:40-11:15 <i>Groups C &amp; D Independent work and iReady</i>  Groups A & B: <i>iReady</i>	10:40-10:55 <i>Math Group C</i>  11:00 – 11:15 <i>Math Group D</i>  10:40-11:15 <i>Groups A &amp; B Independent work and iReady</i>  Groups C & D: <i>iReady</i>	10:40-10:55 <i>Math Group A</i>  11:00 – 11:15 <i>Math Group B</i>  10:40-11:15 <i>Groups C &amp; D Independent work and iReady</i>  Groups A & B: <i>iReady</i>	10:40-10:55 <i>Math Group C</i>  11:00 – 11:15 <i>Math Group D</i>  10:40-11:15 <i>Groups A &amp; B Independent work and iReady</i>  Groups C & D: <i>iReady</i>	10:40-11:15 <i>Independent Practice or Graded Formative &amp; iReady</i>  Teacher to meet with small groups, as needed.
<b>11:20-12:05</b>	<b>Social Studies and/or Science Instruction: Both every day or alternating every other day, week or topic</b>				
<b>12:00 – 1:00</b>	<b>Lunch, Brain Break &amp; Specials</b>				
<b>1:00 – 2:05</b>	1:00 – 1:40 <i>Small group intervention</i>  1:40-2:00 <i>Respond to parent and student questions &amp; needs</i>	1:00 – 1:40 <i>Small group intervention</i>  1:40-2:00 <i>Respond to parent and student questions &amp; needs</i>	1:00 – 1:20 <i>Respond to parent and student questions &amp; needs</i>  1:20-2:05 <i>Zone Collaboration</i>	1:00 – 1:40 <i>Small group intervention</i>  1:40-2:00 <i>Respond to parent and student questions &amp; needs</i>	1:00 – 1:40 <i>One on one support sessions and/or small group intervention</i>  1:40-2:00 <i>Respond to parent and student questions &amp; needs</i>



## The ABC's of CCSD Digital Learning Netiquette

A	B	C	D	E
<p><u>A</u>LWAYS use KIND words when communicating with your classmates and teacher.</p>	<p><u>B</u>E RESPECTFUL of your classmates. Ensure that the background images and noises in your learning environment do not disturb or distract others from learning.</p>	<p><u>C</u>OME PREPARED to learn. This includes your appearance, punctuality, learning tools, and completed work. Remember.... cameras on and mics off!</p>	<p><u>D</u>ISCUSSIONS should remain ON TOPIC. Don't start side conversations that distract from the lesson.</p>	<p><u>E</u>XACT LANGUAGE is used in the digital classroom, too. Use proper grammar and spelling in the discussion boards.</p>

\* ALL CCSD DIGITAL CLASSROOM PARTICIPANTS ARE EXPECTED TO ADHERE TO 2021-2022 CCSD CODE OF CONDUCT \*



# Cherokee County School District Remote Digital Learning SY2021-22

## MS/HS Instructional Models SY21-22

Middle and High School students who declare an interest in Digital Learning in the 2021-22 school year will be scheduled into a specific digital learning period with a teacher dedicated to digital learning for that class period. This model is similar to how students were scheduled for digital learning during the 2020-21 school year. However, the instructional design model for digital learning will be different and not include a packaged program such as APEX. The curriculum utilized will primarily be designed by teachers and available in Canvas.

Digital Learning for students in grades 6-12 will be based on a form of blended instruction in which students will learn in part through online learning, with some element of student control over time and or pace. Teachers will provide students with engaging lessons and activities in Canvas and will include both live and recorded instruction offered remotely during designated digital learning periods.

Teachers with simultaneous concurrent teaching experience may have the option to provide live lessons to both face-to-face and digital students at the same time during designated class periods. Communication regarding specific days and times for this instructional model will be communicated by the appropriate teacher.



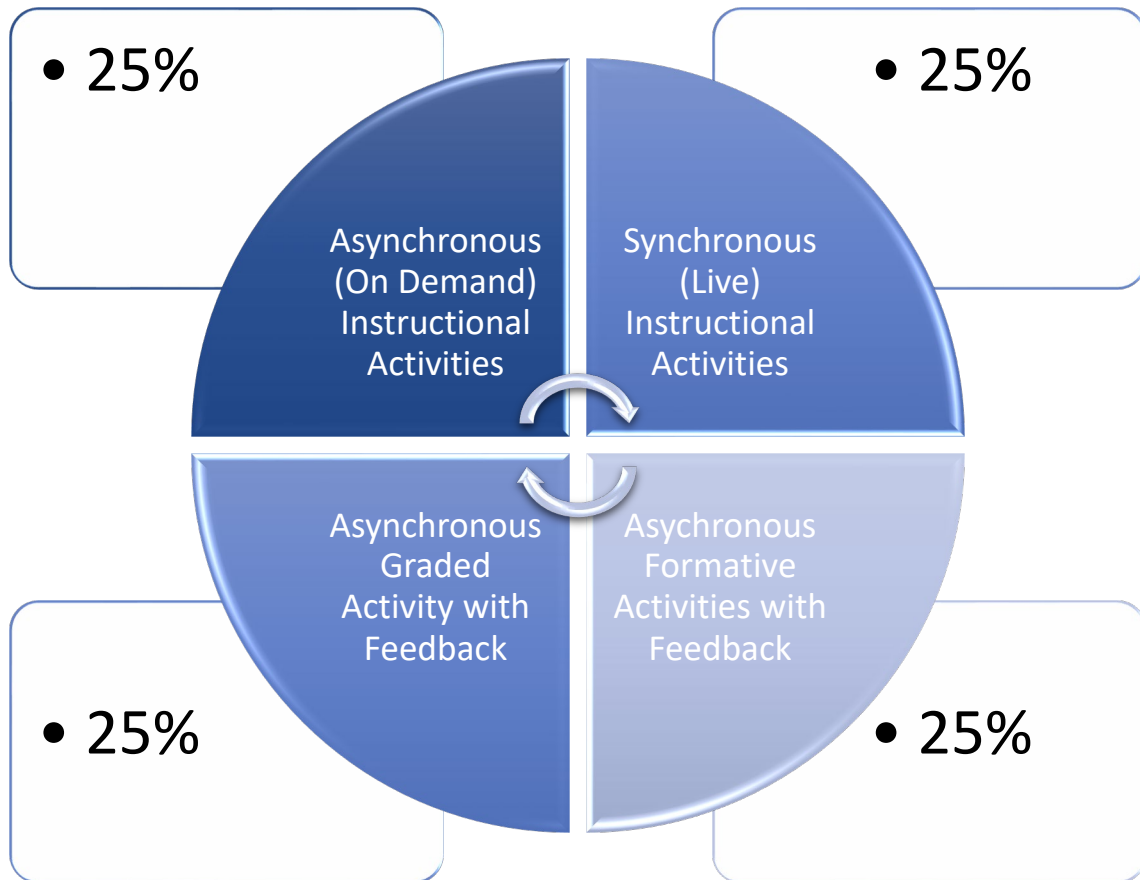
# Cherokee County School District Remote Digital Learning 2021-22

## MS/HS Digital Learning Environment Chart

	Digital/Full Time Remote Option	Quarantined Support
Digital Learning Instructional Design	Digital Instruction is CCSD teacher-designed; students have some control over time, place, and/or path; a mix of live & recorded lessons; activities provided through Canvas	Utilize digital content through PLC/DL teacher; must use CCSD Teaching & Learning Maps
CCSD Digital Teacher Role	Provide the student with engaging lessons and activities to include live instruction, recorded instruction, small group instruction, flexible assignments, and appropriate assessments	Provide students with engaging lessons and activities that mirror or appropriately replicate what the student is missing during in-person learning
Digital Course Pacing	Remote blended learning courses are teacher-paced according to CCSD grading terms and Teaching & Learning Maps	Students will participate in their regularly scheduled courses that are teacher-paced according to CCSD grading terms and Teaching & Learning Maps
When is Simultaneous Concurrent Teaching appropriate?	When courses cannot form a digital learning period (e.g., Advanced Placement) and the coursework lends itself to being served through this model; at the discretion of the school to implement	When the teacher can implement this model and/or is unable to provide appropriate digital content for the course; at the discretion of the school to implement
Course Availability	All CCSD courses are available to students except for those unable to be offered through remote learning options such as band, chorus, upper-level fine arts, upper-level CTAE	All courses: students who are quarantined will continue to participate in their regularly scheduled courses
Course Rescue Unit Recovery	Course Rescue will be available to support unit recovery for digital remote learners	Course Rescue will be available to support unit recovery



MS/HS Blended Remote Unit Planning Framework







# Cherokee County School District Remote Digital Learning 2021-22

## Digital Instruction for Students with Disabilities

Students with 504 Plans or Individual Education Plans (IEPs) receiving instruction via digital learning or blended learning will follow the Contingency Plan developed by the respective teams.

### Special Education Preschool- Learning Plan

#### **Special Education Preschool - Digital Learning Plan**

- Opening - Recorded Morning Message (Welcome-Summary of the Learning/Assignments for the Day)
- Read Aloud/Story Time (5-7 min) & Number Talks (5-7 min)- live session to allow for interaction - recorded for later re-play
- Live lessons with individualized instruction - 3x per week - (20 minutes each)
- Individualized Activities
  - Educational Links provided by teacher
  - Choice Boards with instruction geared toward IEP goals and objectives/GELDS
  - Listening/Watching Videos
  - Flip Grid Videos
  - Watch/Listen to Foundations Quick Drill
  - Teachtown (for AU students)
- On Flex Days without individualized instruction, teachers will teach/record lessons, plan for future lessons, summarize & document data.

### Special Education Teachers (ES/MS/HS)

The table below outlines instructional expectations in considerations of specifically designed instruction. The time allotted per grade level will be consistent across the district; however, schedules may vary by school.

Preschool-Grade 2	Grades 3-5	Grades 6-12
Minutes per day for Literacy and Numeracy will align with guidance from C&I for general education courses.	Minutes per day for Literacy, Numeracy and Specials will align with guidance from C&I for general education courses.	Minutes per subject will align with guidance from C&I for general education courses.



## Cherokee County School District Remote Digital Learning SY2021-22

**Resource/Co-taught/Collaborative Services and Standards-based Programs (REACH and COMPASS)** students who receive specifically designed instruction in a standards-based classroom will be provided virtual instruction specified in the previous charts for each instructional level. Families will collaborate with their student's IEP team to review and develop a CCP to outline accommodations, services and supports needed in the digital learning environment.

**Modified and Standards-based small group classes (ACHIEVE)** students supported in a small group on a modified curriculum who declare for Digital Learning in the 2021-22 school year will be scheduled into a digital classroom with a teacher dedicated to digital learning using our learning management system, Canvas. The learning model is similar to the format utilized for digital learning in the 2020-21 school year.

Digital learners will participate in a full day of learning just like their face-to-face peers in the building. Digital learning will include Reading, writing, language, math, social studies, science, adaptive physical education, and adaptive music instruction.

Students are expected to participate in live whole group lessons, live small group lessons, and asynchronous instructional lessons over video and/or another digital format. For students who can not access or navigate through the necessary technology, services and instructional materials will be provided via e-mails/hard copies, with scheduled phone calls to check in on student progress and to provide necessary supports. Families will collaborate with their student's IEP team to review and develop a CCP to outline accommodations, services and supports needed in the digital learning environment.

**Itinerant Service Providers (DHH, OI, VI), Community-Based and Preschool Teachers** will provide services listed in the IEP, to the degree possible. Families will collaborate with their student's IEP team to review and develop a CCP to outline accommodations, services and supports needed in the digital learning environment.

**Speech-Language Pathologist, Occupational Therapists, and Physical Therapists** will provide services as listed in the IEP (to the degree possible) families will collaborate with their student's IEP team to review and develop a CCP to outline accommodations, services and supports needed in the digital learning environment.